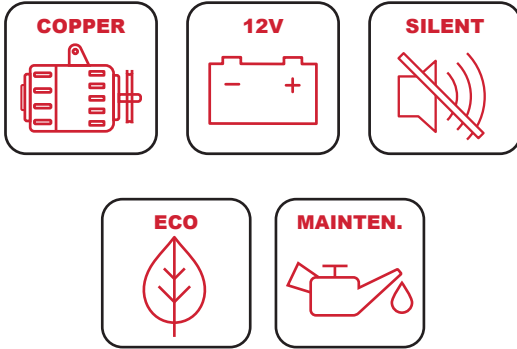




SC2000i

GASOLINE GENERATOR



SPECIAL FEATURES

Inverter technology for clean power
THD≤3%

Economy system, electronic speed control function
Saves fuel cost

60dB Low noisy provide you a comfortable home and office environment

Alternator:
99.9% Cooper wire alternator
Longer lifetime

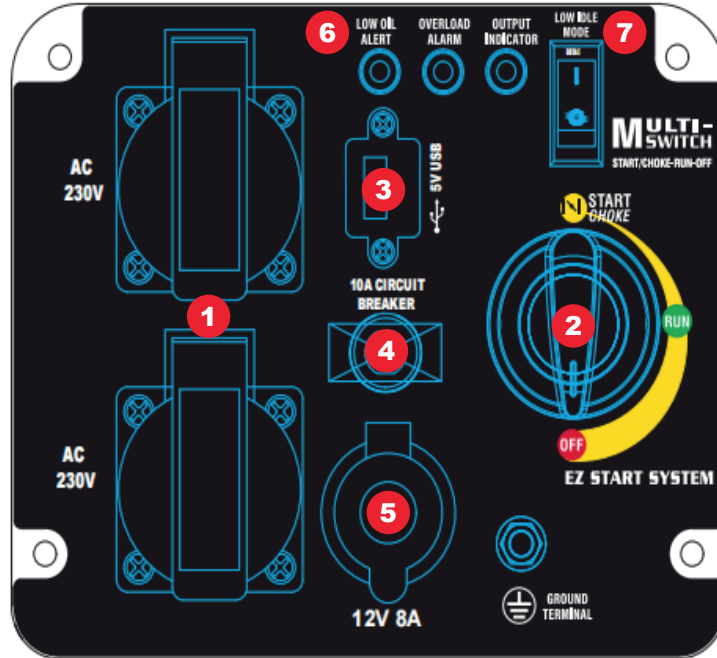
Engine:
EURO V advanced OHV Engine
Easy starting and operation

Light and portable, suitable for outdoor and camping

SPECIFICATION

Frequency	50HZ
Voltage	230V
T.H.D	<3%
AC 230V Maximum	2000watt
AC 230V Rated	1600watt
Starting type	Recoil start
Number phase	Single Phase
Power factor	1.0
Engine model	AP149F
Displacement	79cc
Engine type	Gasolina 4 stroke OHV air cooling
Noise Level (@1/4 load, 7m)	60dB
Fuel tank capacity	4L
Run time (50%-100% load)	6.5-4.0h
Hourly consumption at 50% 100% loads	(0.6L/H, 6.5H) (1L/H, 4H)
Oil grade and capacity	3.8l SAE10w30
Insulation grade	H
Wheel kit	-
Dimensions	530*315*490mm
Weight	21kg

CONTROL PANEL



1. Two 16A European sockets
2. 3 in 1 Switch
3. 5V USB Port
4. 10A Circuit breaker
5. 12V DC Cigarette socket
6. Low oil alert | Over load alarm | Output Indicator
7. Low Idle